

Precision Machining In-House Capabilities

- ★ Machining
- ☆ Ancillary Processes
- ⊕ Coatings

CONVENTIONAL METALS

	EDM ★	Grinding ★	Lapping ★	Milling ★	Turning ★	Brazing ☆	Ion Milling ☆	Photo Etch ☆	Precision Cleaning ☆	Heat Treat ☆	Stress Relieve ☆	Thermal Cycling ☆	Assembly ☆	Chem. Mill / Etch ☆	Plasma Spray ⊕	Anodize ⊕	Chromate Conversion Coating ⊕	Nickel Sulfamate Plate ⊕	Nickel Plate ⊕	Gold Plate ⊕	Black Nickel Plate ⊕	Copper Plate/Strike ⊕	Passivation ⊕	Painting ⊕	
Aluminum																									
Alloys, Castings and Forgings	●	●	●	●	●				●		●	●	●	●	●	●	●	●	●	●	●	●	●	●	●
Carbon Steel																									
Alloys and Forgings	●	●	●	●	●				●		●	●	●		●			●	●	●	●	●	●	●	●
Copper	●	●	●	●	●				●			●	●		●			●	●	●	●	●	●	●	●
Stainless Steel																									
Alloys, Castings and Forgings	●	●	●	●	●				●	●	●	●	●		●			●	●	●	●	●	●	●	●

EXOTIC METALS

Beryllium	●	●	●	●	●	●	●	●	●	●	●	●	●	●	●	●	●	●	●	●	●	●	●	●	●
Be-Al																									
Alloys and Castings	●	●	●	●	●			●	●	●	●	●	●	●	●	●	●	●	●	●	●	●	●	●	●
Be-Cu	●	●	●	●	●			●	●	●	●	●	●		●										●
Borzon	●	●	●	●					●				●												●
Chromium	●	●	●						●				●												
Cobalt	●	●	●						●				●					●	●	●	●	●	●	●	●
Columbium / Niobium	●	●	●						●				●												●
E-Materials																									
E-20	●	●	●	●	●				●	●	●	●	●			●	●	●	●	●	●	●	●	●	●
E-40, E-60	●	●	●						●	●	●	●	●			●	●	●	●	●	●	●	●	●	●
Hafnium		●	●	●					●				●												
Gold	●	●	●	●	●				●																
Invar	●	●	●	●	●				●	●	●	●	●			●		●	●	●	●	●	●	●	●
Magnesium		●	●	●	●				●				●												
Manganese	●	●	●	●	●				●				●												
Metal Matrix	●	●	●	●	●				●			●	●		●			●	●	●	●	●	●	●	●
Molybdenum	●	●	●	●	●				●				●												●
Nickel Alloys																									
Hymu-80™	●	●	●	●	●				●		●	●	●												●
Inconel	●	●	●	●	●				●		●	●	●												●
Waspalloy / Hastalloy	●	●	●	●	●				●		●	●	●												●
Tantalum	●	●	●	●	●				●				●												
Titanium	●	●	●	●	●				●	●	●	●	●	●	●	●	●	*	●	●	●	●	●	●	●
Tungsten	●	●	●	●	●				●				●												
Silver			●						●																
Zirconium	●	●	●	●	●				●		●	●	●												

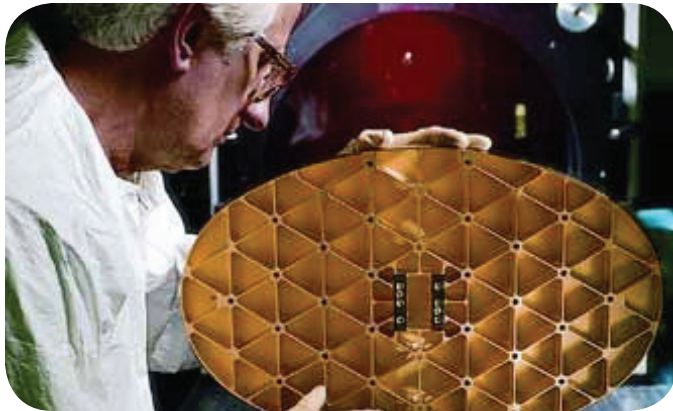
* Phosphate coating

Precision Machining In-House Capabilities

- ★ Machining
- ☆ Ancillary Processes
- ⊕ Coatings

NON METALS

	EDM ★	Grinding ★	Lapping ★	Milling ★	Turning ★	Brazing ☆	Ion Milling ☆	Photo Etch ☆	Precision Cleaning ☆	Heat Treat ☆	Stress Relieve ☆	Thermal Cycling ☆	Assembly ☆	Chem. Mill / Etch ☆	Plasma Spray ⊕	Anodize ⊕	Chromate Conversion Coating ⊕	Nickel Sulfamate Plate ⊕	Nickel Plate ⊕	Gold Plate ⊕	Black Nickel Plate ⊕	Copper Plate / Strike ⊕	Passivation ⊕	Painting ⊕
Aluminum Oxide		●	●						●															
Beryllium Oxide		●	●						●															
Carbon		●	●	●	●				●															
Ceramics		●	●						●															
Delron™				●	●				●				●											
Ferrite		●	●						●				●											
Fused Quartz		●	●						●				●	●										
Fused Silica		●	●						●				●	●										
Germanium		●	●						●															
Nylon			●	●	●				●				●											
Pyro-Ceram™		●	●						●				●											
Sapphire		●	●						●															
Teflon™				●	●				●				●											
Zerodur™		●	●						●				●											



GENERAL DYNAMICS
Mission Systems

+1 256 737 5200 • gdmissionsystems.com • PrecisionSupport@gd-ms.com

©2020 General Dynamics. All rights reserved. General Dynamics reserves the right to make changes in its products and specifications at anytime and without notice. All trademarks indicated as such herein are trademarks of General Dynamics. All other product and service names are the property of their respective owners. © Reg. U.S. Pat. and Tm. Off.

D-PrecisionInHouse-02-0620