

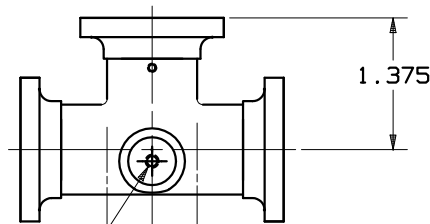
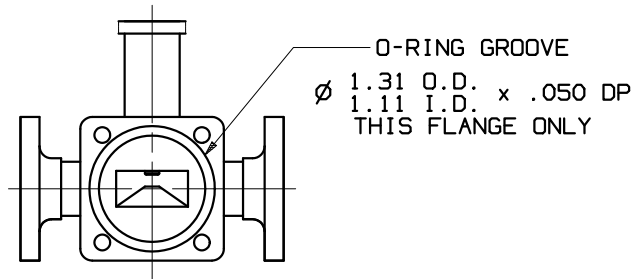
SPECIFICATIONS

REVISIONS

FREQUENCY BAND : 10.95 - 12.75 GHz
VSWR : 1.2:1 MAX ALL PORTS
 (SYMETRICALLY DRIVEN)
INSERTION LOSS
 (COMMON PORT TO INPUTS) : 3.2 dB MAX
PHASE BALANCE : ±5° (COMBINING PORTS)
ISOLATION (INPUT PORTS): 20 dB MIN
POWER HANDLING : 1 W PER INPUT PORT

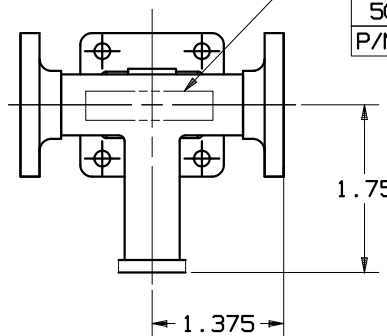
PRESSURIZATION: SEALED TO 2.0 PSI
FINISH
 INTERIOR AND
 FLANGE FACES: CHEMFILMED PER MIL-C-5541C,
 CLASS 1A
 EXTERIOR: WHITE PAINT, COLOR #17875 PER
 FED-STD-595.

REV	DESCRIPTION	DATE	APPROVED
A	SEE ECN# 3435		

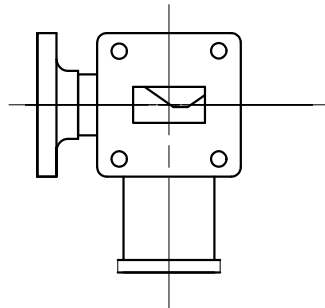
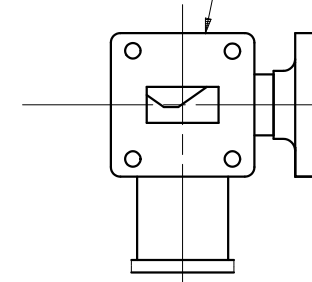


6-32UNC-2B THRU

GD SATCOM
 50478 XX-XX
 P/N 111975-15



WR75 FLANGE
 INTERFACE
 4 PL



UNLESS OTHERWISE SPECIFIED		SIGNATURES	DATE	GENERAL DYNAMICS PROPRIETARY	
DIMENSIONS ARE IN INCHES		DRAWN: J. QUICHO	11-25-09	GENERAL DYNAMICS SATCOM Technologies 3111 Fujita St., Torrance, CA 90505, (310) 539-6704	
TOLERANCES-		CHECKED:			
SURFACE .XX ±.02		RF ENG:			
.XXX ±.003		ENGRG:			
63 ✓ ANGLES±		MFG:		Ku-BAND MAGIC TEE	
MATERIAL CAST ALY 356		EAR CONTROLLED:			
FINISH		Export or re-export subject to 15 CFR 700-799.			
SIZE C	FSCM No. 50478	DWG No. 111975-15	REV A	SCALE: 1:1 SHEET 1	