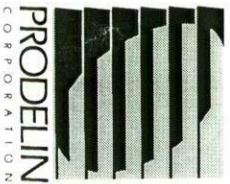
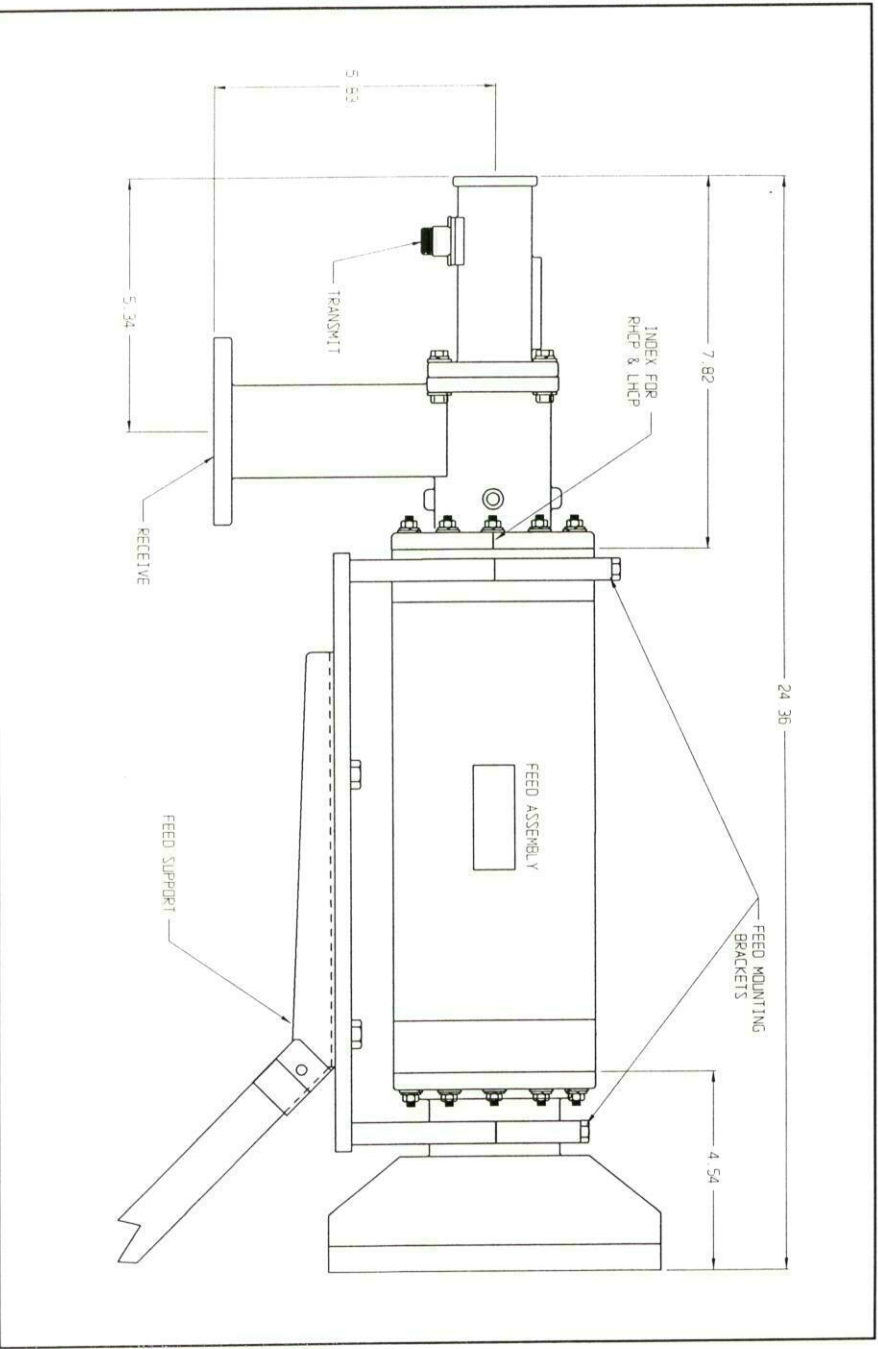


# PRODELIN

## 3.8M C-Band Circular Polarized Feed

Specifications	3.8M
Operating Frequency	3.7 - 4.2 GHz
Receive (side port)	5.925 - 6.425 GHz
Transmit (through port)	
Midband Gain	
Receive (side port)	41.7 dBi
Transmit (through port)	45.6 dBi
Voltage Axial Ratio	1.25 (1.94 dB)
TX	1.09 (0.75 dB)
Cross-Pol Isolation	19 dB
Rx	27 dB
Tx	75 dB
Port-to-Port (Rx/Tx) Isolation	1.33
VSWR Max	WR-229
Feed Interface	Rx Tx
Feed Length	Type N or WR-137 23.83 inch



Prodelin Corporation  
 PO Box 368  
 1700 NE Cable Drive  
 Conover NC 28613 USA  
 Phone 828/464-4141  
 Fax 828/466-0860  
 Home Page: [www.prodelin.com](http://www.prodelin.com)



PRODELIN  
 ISO 9002 registered  
 certificate no. A2421