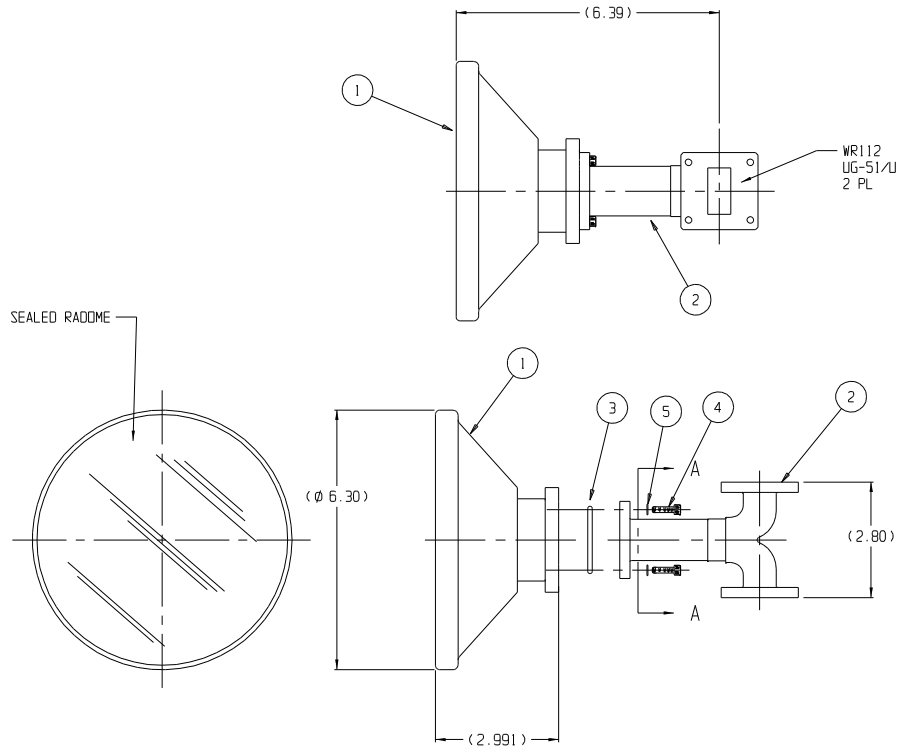
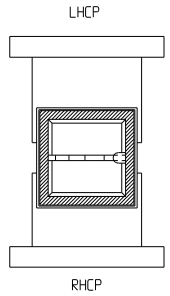


NOTES:

1. PLACE O-RING (ITEM #3) INTO GROOVE OF FEED ASSEMBLY (ITEM #1).
2. ATTACH DMT/POLARIZER (ITEM #2) USING #6 SCREWS AND LOCKWASHERS (ITEMS #4 & #5).
3. TIGHTEN SECURELY.



REVISIONS			
SYM.	DESCRIPTION	DATE	APPD
A	REVISED PER ECN 3416	06/15/07	ABR



SPECIFICATION	TRANSMIT	RECEIVE
FREQUENCY	7.90 - 8.40 GHz	7.25 - 7.75 GHz
ISOLATION	18 dB MIN.	18 dB MIN.
INSERTION LOSS	0.15 dB MAX.	0.15 dB MAX.
VSWR	1.2 :1 MAX.	
AXIAL RATIO	0.50 dB MAX.	

5	LOCK WASHER, #6	4	8200-010
4	SCREW, SH #6-32 x .50	4	8300-002
3	O-RING, 1.487 ID x 1.693 OD	1	0198-155
2	DMT/POLARIZER - X-BAND	1	112841-01
1	ASSY, FEED HORN	1	0183-748

ITEM	DESCRIPTION	REQ.	PART NO.
------	-------------	------	----------



TITLE
ASSY, X-BAND CIRC. POL. FEED

DIMENSIONS ARE IN DECIMAL INCHES, UNLESS OTHERWISE NOTED
TOLERANCES ON FINISHED DIMENSIONS ARE AS FOLLOWS:
X = ± .1 XXX ± .010
XX = ± .05 ANGULAR ± 1°

Prodelin's drawings, sketches, computer programs, plans, specifications, technical data, prototype products, blueprints, photographs, instructions, diagrams, models, formulas, tables, engineering designs, diasthetics, tapes, software, other electronic media (defined to include, but not be limited to, the system functional design, logic flow, algorithms, application programs, operating systems, software design implementation, tests, test results, operation, diagnosis, repair...), and/or documents collectively "Proprietary Materials" are confidential and proprietary in nature and are considered by it to constitute "trade secrets" as defined by R.C. Gen. Stat. §§6-152 (3)(a) and (b) of the North Carolina Uniform Trade Secrets Act, by the Uniform Trade Secrets Act and by any other states' "trade secrets" trade secrets legislation. If some of the information or documents that were incorporated into such drawings, sketches, computer programs, plans, specifications, technical data, prototype products, blueprints, photographs, instructions, diagrams, models, formulas, tables, engineering designs, diasthetics, tapes, software, other electronic media (defined to include, but not be limited to, the system functional design, logic flow, algorithms, application programs, operating systems, software design, implementation, tests, test results, operation, diagnosis, repair...), and/or documents or other information that was incorporated into the Proprietary Materials came from a customer or third party and whether such Proprietary Materials do or do not constitute intellectual property, patent, trademark or copyright rights or material, THESE "PRODELIN MATERIALS" MAY NOT BE COPIED, REPRODUCED, REVEALED OR DISSEMINATED IN WHOLE OR IN PART TO OTHER PARTIES (EXCEPT AS NOTED IN WRITING) WITHOUT PRIOR WRITTEN APPROVAL BEING OBTAINED FROM THE PRODELIN DOCUMENTATION SUPERVISOR OR A DULY AUTHORIZED REPRESENTATIVE.

MATERIAL	FINISH		
NEXT ASS'Y	CODE IDENT. NO. 94661		
DRAWN	02/17/07	BY	R.F.
CHECKED	BY	0183-747	
ENGR.	BY	A	
MFG APVD	BY	SCALE	1 = 2 SH. 1 OF 1