



A Commercially Available Toolkit for the Tactical Leader



Visualize, Manage, and Understand the Tactical Space

GeoSuite empowers tactical leaders to efficiently analyze, plan, rehearse, execute, and review strategic operations. Backed by an innovative, resilient network solution, GeoSuite utilizes an intuitive map-centric interface including unique multimedia tools, advanced planning capabilities, and visualizations

specifically focused on the operational environment. With a focus on rapid dissemination and sharing of critical information, GeoSuite delivers real-time actionable intelligence and situational data in Disconnected, Intermittent, and Limited (DIL) environments.

MISSION PLANNING AND EXECUTION

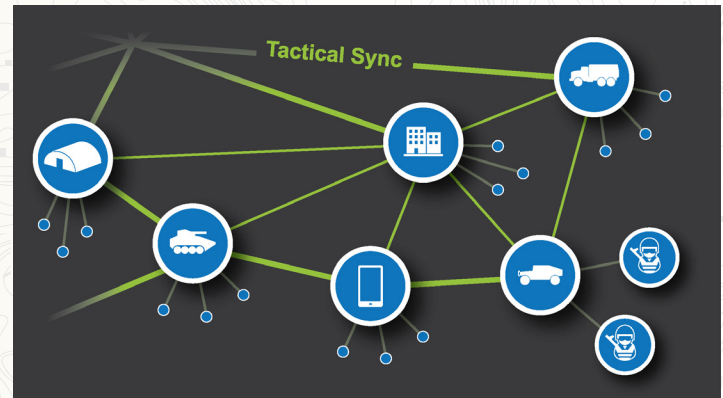
- Geo-referenced visualization for information pattern discovery
- Concentration on specific areas of operation for focused data analysis
- COA development and analysis
- Military standard symbology and support for custom symbol sets
- 'Drag & Drop' utilities and simple user interactions



NETWORK ADAPTABILITY AND COLLABORATION



- Information sharing across the full spectrum of operations, connecting field users to command centers
- Share geo-referenced information and link other users to ongoing activity without leaving the application
- Users collaborate using text, graphics, pictures, video clips, audio clips, KML/KMZ overlays, Microsoft Office® documents, and military symbology
- Minimizes bandwidth, while maximizing delivery of content (events, people, tasks, reports, etc.) and multimedia to tactical-edge users



SITUATIONAL AWARENESS



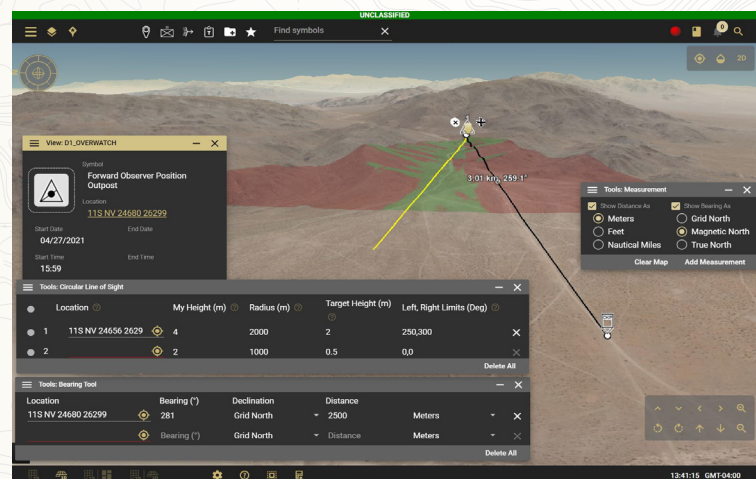
- Near real-time visualization of critical information from multiple sources
- Centralized monitoring and location information of assets and sensors on the network
- Customizable alerts and notifications
- Integrated video viewer for live feeds



GEOGRAPHIC ANALYSIS



- Best in class imagery available even in fully offline mode
- Single point of entry rich with dynamic and customizable map layers
- 2D and 3D maps featuring integrated terrain and route analysis
- Integrated map tools allow quick and accurate measurements of distance, bearing, triangulation, line-of-sight, area, point-of-origin estimation, and radius for rapid situational assessment



GENERAL DYNAMICS
Mission Systems

For more information, contact: GeoSuite_Support@gd-ms.com | gdmissionsystems.com

©2022 General Dynamics. All rights reserved. General Dynamics reserves the right to make changes in its products and specifications at anytime and without notice. All trademarks indicated as such herein are trademarks of General Dynamics. All other product and service names are the property of their respective owners. ® Reg. U.S. Pat. and Tm. Off.