

GEM™ One

Release 1 Features

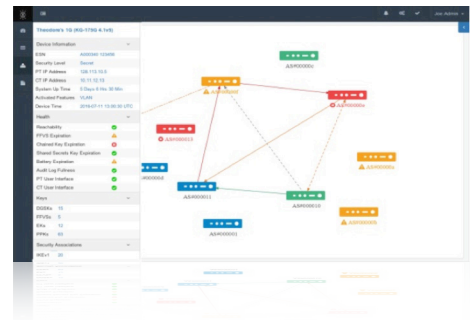
GEM™ One Encryptor Manager software is a robust, easy to use enterprise level device management solution that allows users to centrally discover, configure and manage a network of remote encryption products. This capability provides an accurate enterprise-level view of the network, improving situational awareness, decision cycles, efficiency and cost savings. Built upon industry standards and COTS components, GEM One is the next generation in the GEM family of encryptor management software with an enhanced user interface, performance and workflow. Below is a summary of GEM One Release 1 new features and capability enhancements.

Enterprise Features

NEW Features

Network Topology

The Network Topology feature shows a graphical representation of the devices on the network. Users can arrange all managed devices to best suit their needs and preferences. Within the Network Topology view, communication between devices is represented as links. Links can be viewed as Layer 2 or 3 depending on device mode. This view offers an intuitive progressive display allowing users to hover over a device to receive high level information, select a device to view additional information in on a panel or click on the device for full device configuration screens.



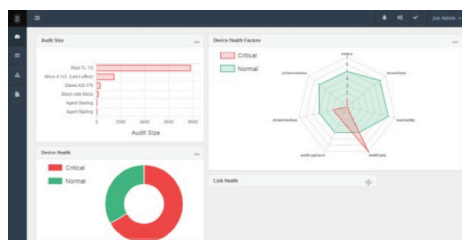
Device Health

The Device Health feature provides status on six health conditions including: Reachability, Device State, Battery Expiration, Plain Text (PT) Link, Cipher Text (CT) Link, FIREFLY Vector Set (FFVS) Key Expiration and Audit Log Fullness. Device Health is clearly displayed within the Device List, Network Topology and the Dashboard.

Links and Link Health

GEM One monitors managed devices to collect relevant information and display route, Security Associations (SAs), and VLAN configurations between devices on the Network Topology. These links will also have health calculations including: One Sided Route, Orphaned SA and VLAN ID Mismatch.

Dashboard



Now users can manage and view the status of their network as a whole with GEM One's new dashboard. The four widgets included are Audit Size, Device Health, Device Health Factors and Link Health.

Device Software Management

This feature manages the distribution and application of Field Software Upgrade (FSU) files. Users can import FSU files into GEM One. The system will recognize the associated device and software version and provide a simple interface to upgrade multiple devices.

File Management

The new File Manager functionality allows users to upload or move configuration files such as cutsheets or FSU files to ease the configuration or upgrade process. When files are uploaded from the client system, GEM One automatically recognizes/labels many file types and also supports user-assigned file types.

Enhanced Features

Device List

Users can view and compile customizable lists of their managed devices, allowing them to search, sort, filter, and re-arrange the information. Users can also save information from the device list to .csv files to create custom reports. The improved preview pane shows additional details and device health status.

Cutsheets

GEM One can capture and apply cutsheets that are compatible with TACLANE Configuration Tool (TCT).

GEM™ONE Release 1 Features

Enterprise Features

Log Management

GEM One collects audit logs from managed devices and archives the logs. GEM One enables users to export/ import audit logs from a single device. Export/ import logs are signed to help ensure integrity of the audit logs.

Device Discovery

With device discovery users can discover a single IP address using an IP address range as well as build or import a list of IP addresses from a file.

Network Managers

GEM One gives users the ability to push multiple network manager definitions to managed devices. This allows devices with different definitions to be managed by a single GEM One.

Task Management

Enables GEM One users to view current, scheduled and executed tasks.

Static Route Management

Provides the ability to create and distribute static routes in bulk to managed devices.

COTS Technology

GEM One is built using modern technologies including HTML5, Bootstrap CSS, Angular JS, JAVA 8, TomEE, and PostgreSQL.

System Management

NEW Features

Certificate Management

In order to support remote access to GEM One, certificates are used to secure the connection. The certificate signing requests allow GEM One to integrate into a site's ecosystem and support generating self-signed certificates for sites that desire a standalone solution

LDAP Configuration

GEM One integrates with Active Directory or LDAP servers for authenticating users. Administrators define the LDAP users that are permitted to access GEM One and define their roles. Users then log into GEM One using enterprise credentials.

TFTP Integration

GEM One allows administrators to configure a 3rd party TFTP that is installed locally on the GEM One server. TFTP is used to send files to/ from managed devices. The File Manager allows users to make files available/unavailable via TFTP.

GENERAL DYNAMICS

Mission Systems

gdmissionsystems.com/cyber • infosec@gd-ms.com

Phone: 781-410-9400 • Toll-free: 888-Type1-4-U (888-897-3148) • Fax: 781-410-9863

©2017 General Dynamics. All rights reserved. General Dynamics reserves the right to make changes in its products and specifications at anytime and without notice. All trademarks indicated as such herein are trademarks of General Dynamics. All other product and service names are the property of their respective owners. © Reg. U.S. Pat. and Tm. Off.

Device Support

GEM One supports 1,000 device and 50 simultaneous concurrent users. GEM One has re-designed the device pages to improve access to information. These changes include moving similar configuration items to a common screen and allowing access to related information in multiple places.

TACLANE-FLEX
(KG-175F)



ALL (R4.2V2)

TACLANE-MICRO
(KG-175D)



R3.5v5, 3.5v6, 4.1vX,
4.2v1

TACLANE-1G
(KG175G)



All (R4.1vX, 4.2v1)

TACLANE-10G
(KG-175X)



All (R4.1vX, 4.2v1)

Sectéra vPer
Phone



In development
4Q 2017



Enhanced Features

Local User Management

GEM One provides the administrator the ability to define user accounts and assign users to the Monitor, User and Administrator roles. In addition, the user has the ability to provide additional "optional" meta-data, such as full name, email address, physical address, and phone number.

Software Settings

For optimal network integration, GEM One allows users to configuration certain system parameters settings including:

- Password Complexity Rules
- Login Consent Banner
- GEM One License Key Management
- TFTP Settings
- Performance Settings
- SNMP Settings
- Database and Keystore Passwords Management
- Device and Link Health Configuration
- Audit Log Management Configuration